

School Safety Programme

Towards a Culture of Disaster Prevention in Korea



UNDRR

UN Office for Disaster Risk Reduction

With the support of



Ministry of
the Interior and Safety



Incheon
Metropolitan City

SENDAI FRAMEWORK

FOR DISASTER RISK REDUCTION 2015-2030

A large, light gray watermark of the United Nations logo is centered in the background. It features a world map surrounded by a laurel wreath. A solid blue horizontal line is positioned in the upper left corner of the slide.

What is Disaster Risk Reduction?

Hazard



MATCH

THE PICTURES

WITH

THE NAME and THE DESCRIPTION

and then say whether you think it's a natural
or a human-made hazard.



TSUNAMI

A HUGE WAVE, USUALLY CAUSED BY VOLCANIC OR EARTHQUAKE ACTIVITY UNDER THE OCEAN, WHICH CAN EVENTUALLY CRASH INTO THE SHORELINE. THE EFFECTS ON THE COMMUNITY CAN BE DEVASTATING.

EPIDEMIC

THE RAPID SPREAD OF AN INFECTIOUS DISEASE TO LOTS OF PEOPLE.

HURRICANES

(ALSO KNOWN AS TYPHOONS OR CYCLONES, DEPENDING ON WHERE YOU LIVE): THE STRONGEST TROPICAL STORMS. THEY FORM IN SPECIFIC CONDITIONS.



EARTHQUAKES

THE SHAKING AND MOVING OF THE GROUND DUE TO MOVEMENTS OF THE PLATES THAT MAKE UP THE SURFACE OF THE EARTH.

DROUGHTS

WHEN IT DOESN'T RAIN FOR AN UNUSUALLY LONG TIME AND THIS LEADS TO A SERIOUS WATER SHORTAGE. THEY CAN ALSO BE CAUSED BY HUMAN ACTIVITIES. FOR EXAMPLE, BUILDING A DAM UPSTREAM COULD CAUSE A DROUGHT FOR THE VILLAGERS DOWNSTREAM.

PLAGUE

THE RAPID SPREAD OF A PLANT, ANIMAL OR INSECT THAT CAUSES HARM TO PEOPLE, THEIR CROPS OR THEIR ANIMALS.



FLOODS

WHEN A RIVER BURSTS ITS BANKS AND THE WATER SPILLS OUT ONTO OTHER PLACES.

AVALANCHES

WHEN LOTS OF SNOW SUDDENLY MOVES DOWNHILL.

TECHNOLOGICAL HAZARDS

A HAZARD CAUSED BY TECHNOLOGICAL OR INDUSTRIAL CONDITIONS. FOR EXAMPLE, A FACTORY EXPLOSION, CHEMICAL SPILL OR NUCLEAR RADIATION.



LANDSLIDES/ MUDSLIDES

WHEN LOTS OF LAND AND MUD SUDDENLY MOVE DOWNHILL.

VOLCANOES

WHEN MAGMA REACHES THE EARTH'S SURFACE, CAUSING ERUPTIONS OF LAVA AND ASH.

WILDFIRE

WHEN A FIRE GETS OUT OF CONTROL IN THE FOREST.



EXERCISE 2

(See Facilitators' Notes)

WHAT KINDS OF HAZARDS
HAPPEN MOST FREQUENTLY
IN YOUR AREA?



Vulnerability



Question: Find people who are vulnerable

Let's assume that you have received an emergency disaster warning message. Who around us is exposed to the greatest level of risk?
What could be done to help those who are vulnerable to a flood?

Disaster



Difference between hazards and disasters (case study)



Disaster Resilience

Prevention



Disaster Resilience

Preparedness

**Danger!
Rocks are
falling!**



Disaster Resilience

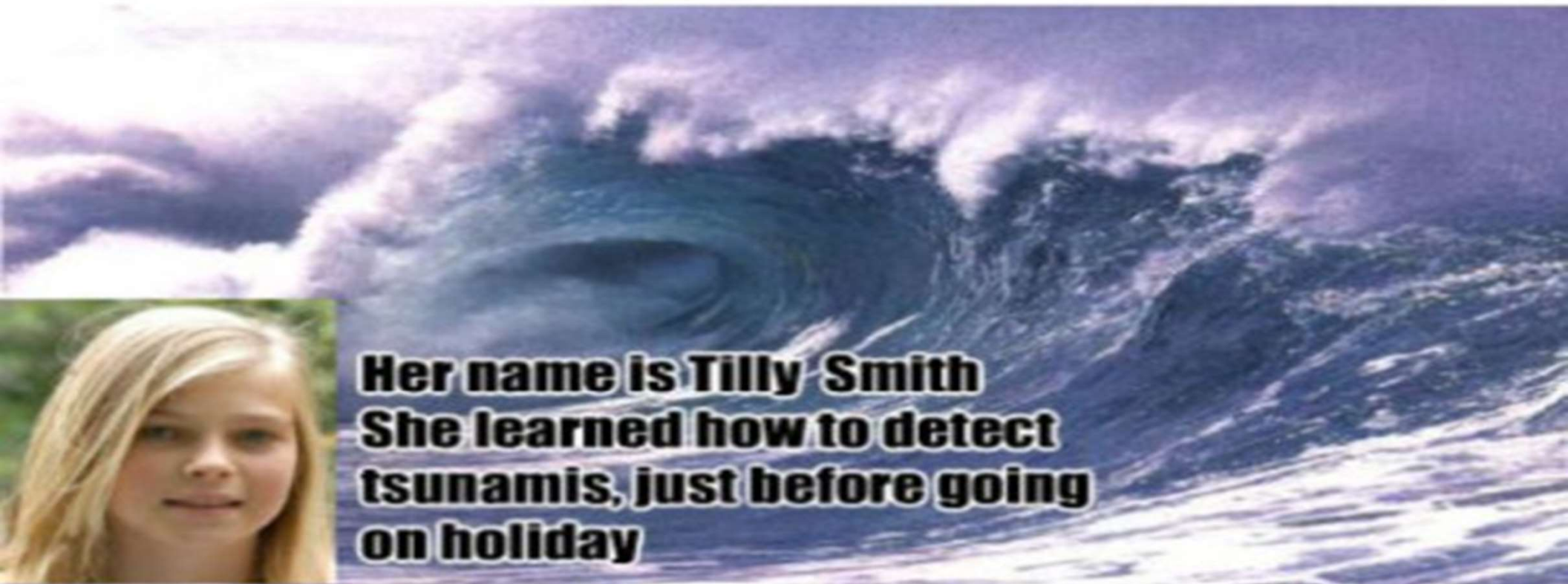
Mitigation





How can children and youth contribute to making our world safer?

A 10 year old saved over 100 people during the 2004 Tsunami in Asia!



**Her name is Tilly Smith
She learned how to detect
tsunamis, just before going
on holiday**

Hazard? Disaster? ~~Natural Hazard~~ Natural Hazard? Vulnerability? Preparedness?



Hazard? Disaster? Exposure? Vulnerability? Preparedness?
Preparedness



Hazard? Disaster? Exposure? Vulnerability? Preparedness?



Hazard? Disaster? Exposure? Vulnerability? Preparedness?
Disaster / Exposure / Vulnerability



Hazard? Disaster? (Exposure? Vulnerability? Preparedness?)



Hazard? Disaster? Exposure? Vulnerability? Preparedness? Preparedness (Capacity Development)





Thank you

**UNISDR for Northeast Asia (ONEA) &
Global Education and Training Institute (GETI)**

4F Songdo G-Tower,
175 Art Center-daero,
24-4 Songdo-dong, Yeonsu-gu, Incheon
Republic of Korea



UN Office for Disaster Risk Reduction



With the support of



Ministry of
the Interior and Safety



Incheon
Metropolitan City