

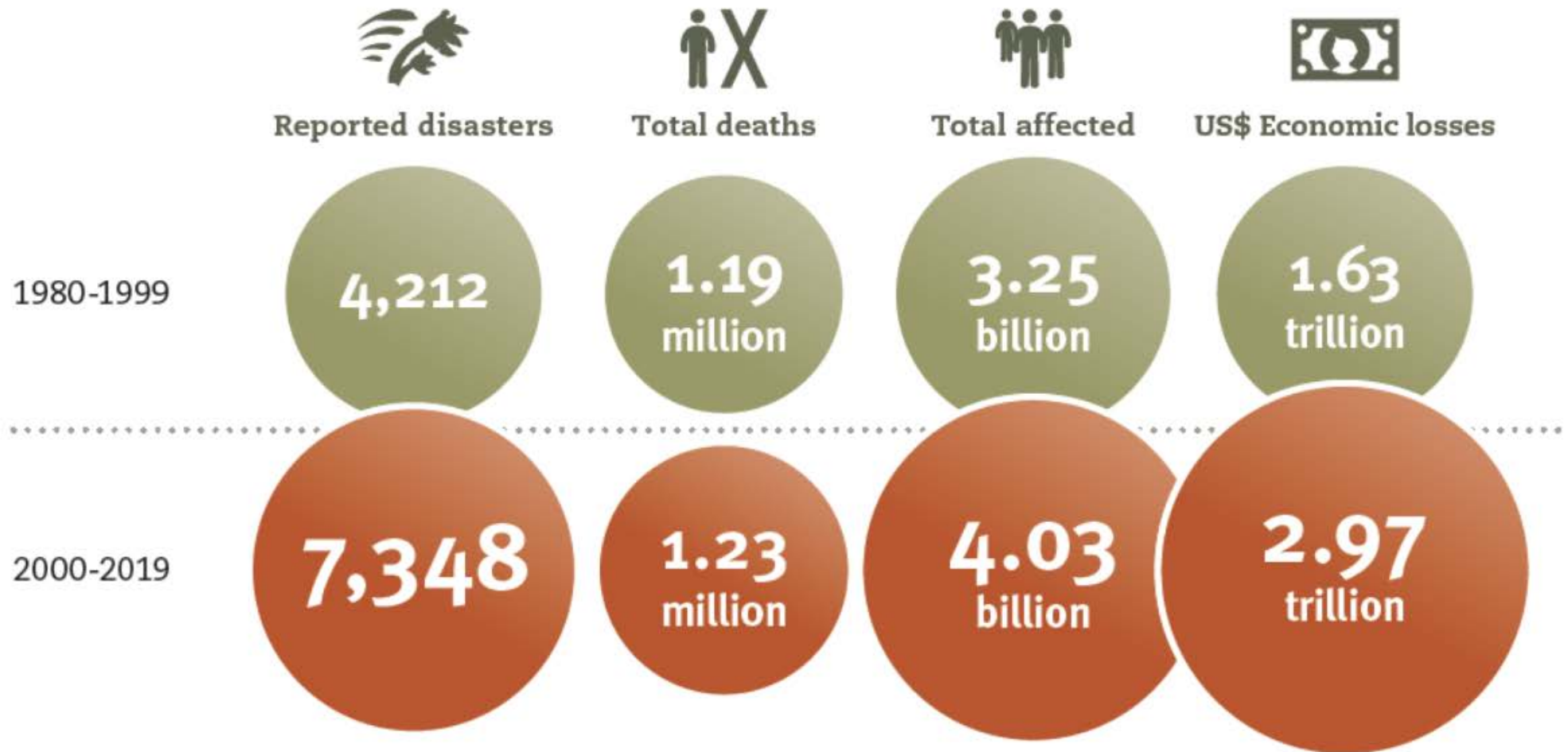
Integrating DRR and Climate Change Adaptation in the UN Sustainable Development Cooperation Framework process

Part of the full Training Package on Integrating DRR and
Climate Change Adaptation in the UN Sustainable
Development Cooperation Framework



Climate changes and disasters disrupting development

Disaster Impacts:
1980-1999 vs. 2000-2019



Climate and disaster risk management – integral to SDG achievement

- Climate and disaster risk management integral to:
 - Reduce risk for the most vulnerable to Leave No One Behind
 - Prevention of crises and building resilience to shocks
 - Manage multidimensional risks in the nexus
- SDG and Sendai Framework targets converge on:
 - Reducing disaster deaths, missing and persons affected
 - Reducing disaster economic loss
 - Increasing number of national and local DRR strategies
- National capacities to manage risks to and from development required in all sectors

1 NO
POVERTY



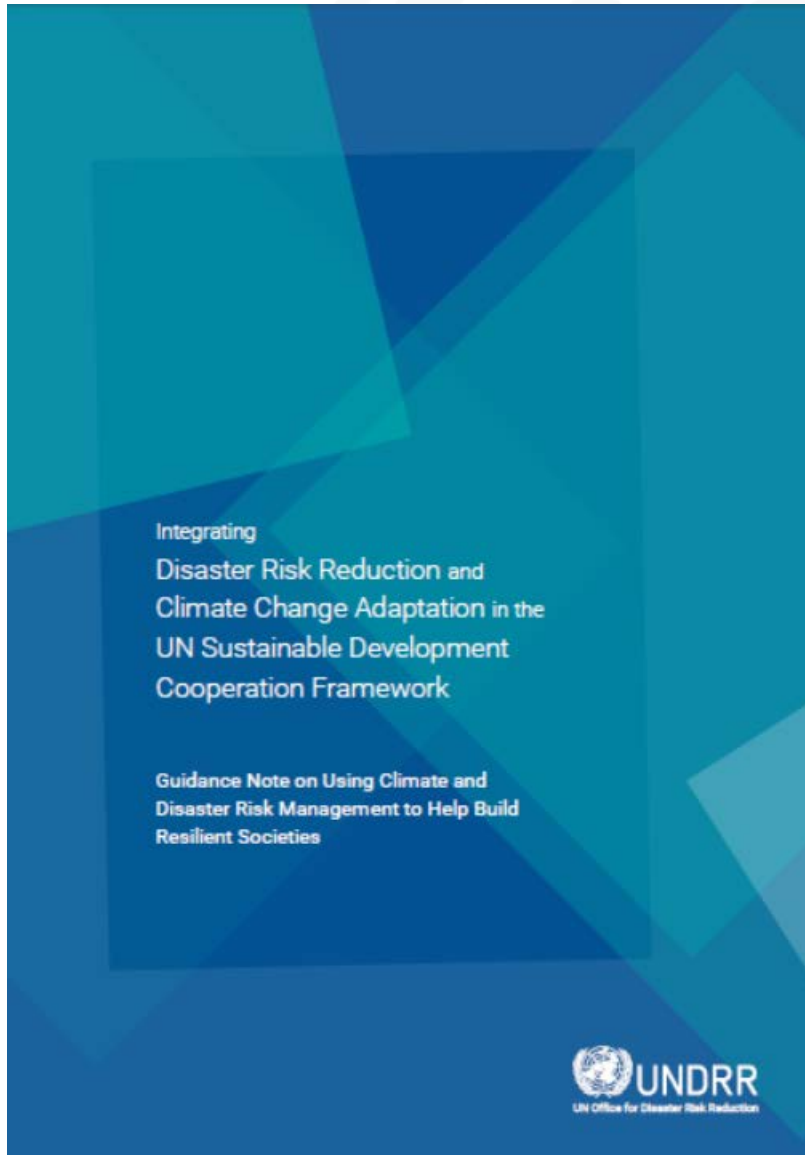
11 SUSTAINABLE CITIES
AND COMMUNITIES



13 CLIMATE
ACTION



The Guidance Note on Integrating DRR and Climate Change Adaptation in the UNSD Cooperation Frameworks



- Developed in 2020 with input from UNCTs
- Checklist and description of actions to ensure a climate and disaster risk-informed approach:
 - Roadmap development
 - Common Country Analysis
 - Cooperation Framework Design
 - UNCT Configuration
 - Funding
 - Implementation, Monitoring and Reporting
 - Evaluation

The Guidance Note on Integrating DRR and Climate Change Adaptation in the UNSD Cooperation Frameworks

Explainers on:

- Key terminology
- Interdisciplinary risk management
- Linkages: LNOB, Nexus, and Prevention agendas
- Impacts of different hazards on sustainable development

Guidance on climate and disaster risk to and from each SDG



BIOLOGICAL HAZARDS

Infectious Diseases, Toxins, Plants, Insect Infestations, Human-animal Conflict, Substances, and Invasive Species

Causes loss of life, health, livestock, and/or crops, undermining food security

Losses and health impacts disrupt economic activities and in some cases ecosystem services, services and education

Livelihood and service disruption entrench multidimensional poverty and can trigger social distancing, gender-based violence and stigmatization



| SDG 11 – SUSTAINABLE CITIES AND COMMUNITIES | |
|--|--|
| <p>11 INCREASED CITIES AND COMMUNITIES</p> <p>"We envisage cities and human settlements that... adopt and implement disaster risk reduction and management, reduce vulnerability, build resilience and responsiveness to natural and human-made hazards and foster mitigation of and adaptation to climate change. We will explore and develop feasible solutions to climate and disaster risks in cities and human settlements, including by collaborating with insurance and reinsurance institutions and other relevant actors with regard to investments in urban and metropolitan infrastructure, buildings and other urban assets, as well as for local populations to secure their shelter and economic needs."</p> <p><i>The New Urban Agenda</i></p> | |
| <p>11.1 By 2030, ensure access for all to adequate, safe and affordable housing and basic services and upgrade slums.</p> <p>11.2 By 2030, enhance inclusive and sustainable urbanization and capacity for participatory, integrated and sustainable human settlement planning and management in all countries.</p> <p>11.4 Strengthen efforts to protect and safeguard the world's cultural and natural heritage.</p> <p>11.5 By 2030, significantly reduce the number of deaths and the number of people affected and substantially decrease the direct economic losses relative to global gross domestic product caused by disasters, including water-related disasters, with a focus on protecting the poor and people in vulnerable situations. *</p> <p>11.8 By 2030, significantly reduce the number of deaths and the number of people affected and substantially decrease the direct economic losses relative to global gross domestic product caused by disasters, including water-related disasters, with a focus on protecting the poor and people in vulnerable situations. *</p> <p>11.C Support least developed countries, including through financial and technical assistance, in building sustainable and resilient buildings utilizing local materials.</p> | <p>Most relevant SDG target</p> <p>11.5</p> |
| <p>How climate and disaster risk can threaten achievement of the SDG</p> <p>Disasters high-impact weather, water and climate events decrease the safety, resilience, and sustainability of people, assets and settlements, especially the poorest and those who live in slums and camp settings.</p> <p>Disasters and climate change drive economic losses through damages and destruction of housing and infrastructure, disruption of basic services, commerce and transportation, and rapid and unplanned urbanization due to displacement of affected people.</p> | |
| <p>How risk-related pursuit of the SDG can generate climate and disaster risk</p> <p>Risk-related urbanization and industrialization can affect water quality and ecosystems, e.g. infrastructure and housing construction on floodplains, wetlands sinking up, polluting incidents and deforestation.</p> <p>Encroachment on natural habitats increase risk of zoonotic diseases with potential for epidemic and pandemic impact.</p> <p>Unplanned and underserved urban slums can affect vector and water borne diseases' prevalence and incidence.</p> | |
| <p>Identifying country-specific climate and disaster risk to achievement of SDG</p> <p>What is the urbanization rate and projections on urban growth? How many people live in sub-standard housing or slum conditions?</p> <p>In urban planning disaster and climate-risk sensitive?</p> <p>What are the recorded urban impacts of disasters and extreme weather, water and climate hazards, e.g. flooding, extreme heat or cold waves?</p> | |



Thank you

Download the Guidance Note from:

<https://unsdg.un.org/resources/integrating-disaster-risk-reduction-and-climate-change-adaptation-un-sustainable>

For more information, please contact your UNDRR Regional Office:

<https://www.undrr.org/about-undrr/where-we-work>